



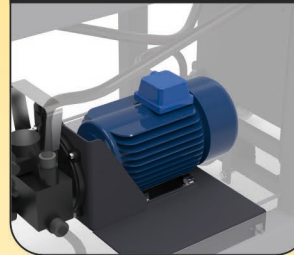
MSE - 213

Hinnenboomstraat 1 bus 2
2320 Hoogstraten
België

T: +32 (0)3-314.18.01
F: +32 (0)3-314-18-02
E: info@BogaertsGL.com
W: www.BogaertsGL.com



electric engine



200l tank



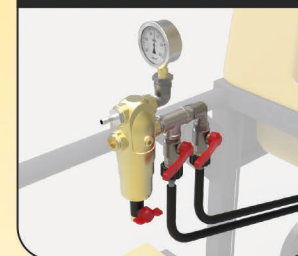
handwash tank



level indication



easy control



spraying nozzle
for both directions



Length	1890 mm
Width	685 mm - 960 mm
Height	2200 mm
Weight	110 kg
Tank volume	200 l
Pump	13 l/min - 20 bar
Batteries	118 Ah - 24 V - full traction